

# 540 MADISON

ENTIRE 9TH FLOOR - 10,900 RSF

► TAKE A VIRTUAL TOUR



## Entire 9th Floor

10,900 RSF

## Asking Rent

Upon Request

## Term

Through January 2026

## Comments

- + Recently built installation
- + 17 perimeter offices – glass fronts
- + 3 perimeter conference rooms (4, 8, 10 seats)
- + 1 interior conference room (glass fishbowl, 6 seats)
- + 23 workstations
- + Open pantry

For further information, please contact our exclusive sublease agents:

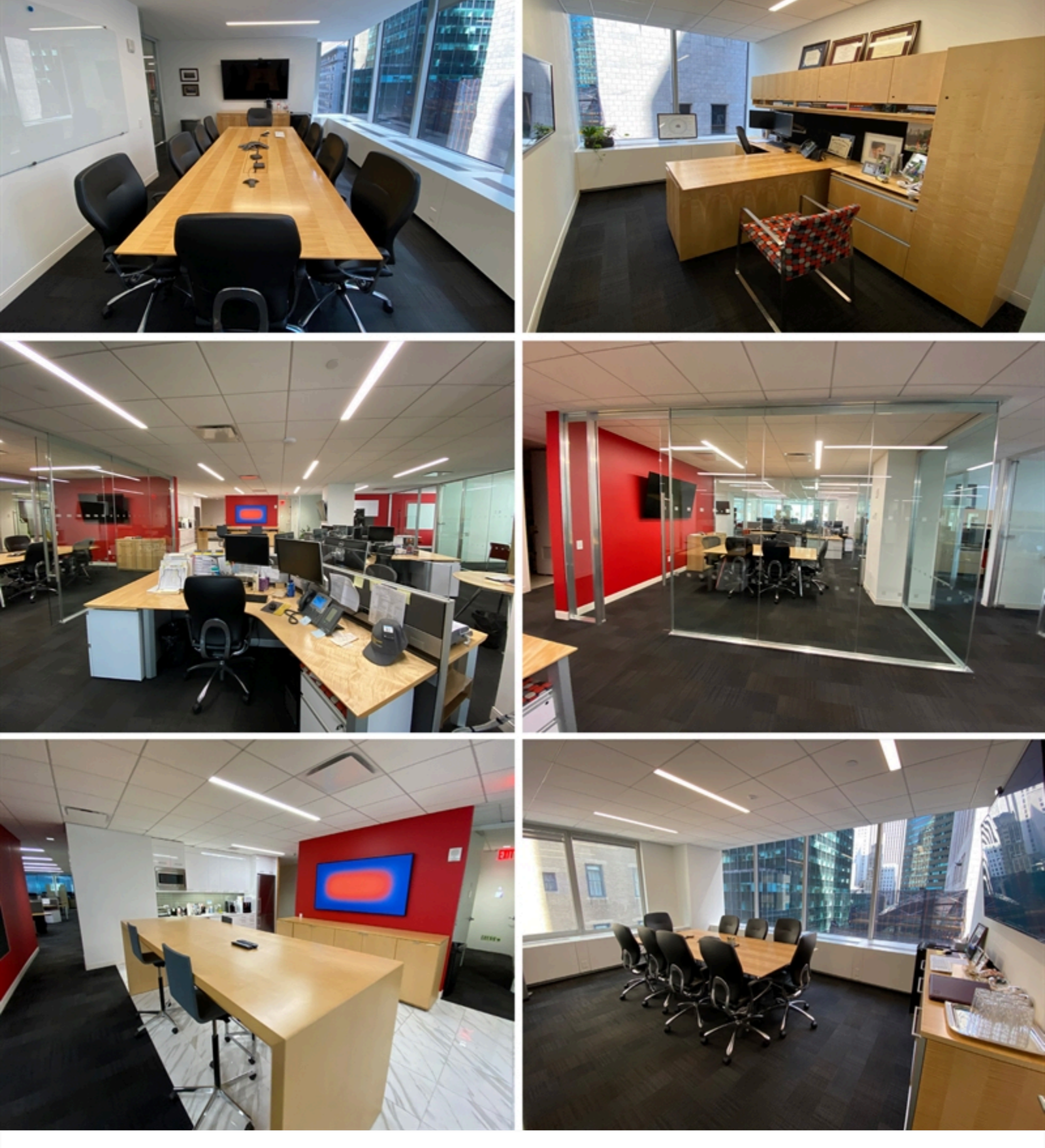
**STEPHEN GORDON**  
sgordon@ngkf.com  
M. 917.318.2730  
O. 212.372.2375

**NATHAN KROPP**  
nathan.kropp@ngkf.com  
O. 212.372.2056



## EXISTING CONDITION

## 540 MADISON

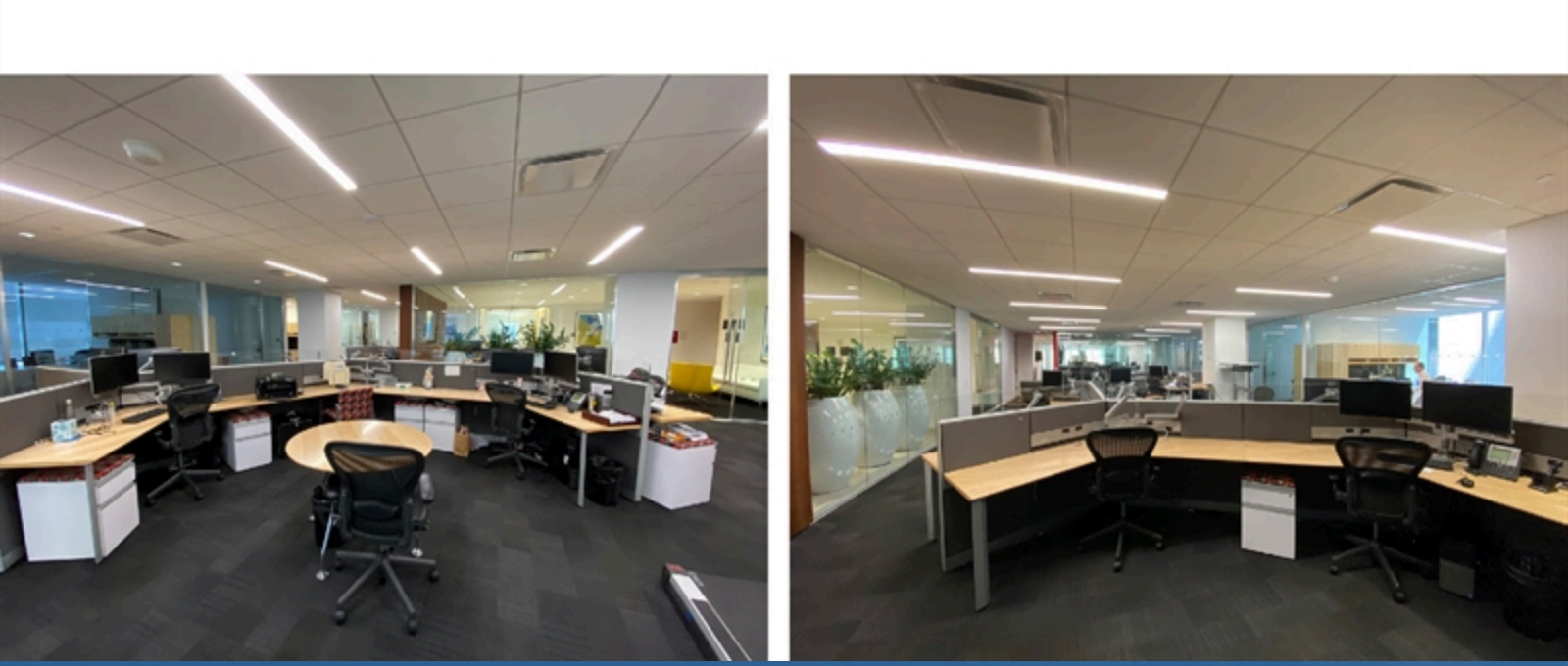
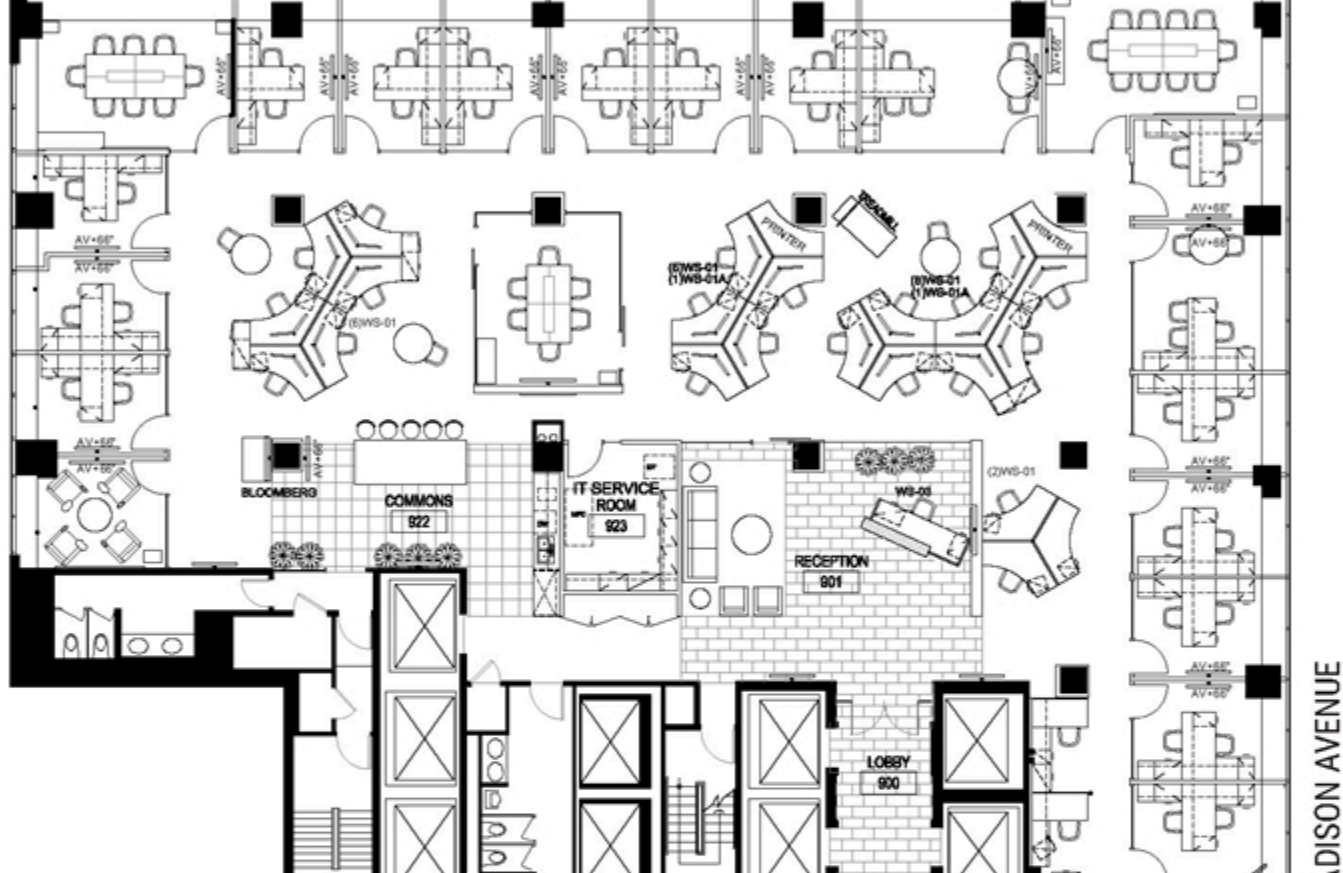


## Entire 9th Floor

10,900 RSF

## 540 MADISON

EAST 55TH STREET



For further information, please contact our exclusive sublease agents:

**STEPHEN GORDON**  
sgordon@ngkf.com  
M. 917.318.2730  
O. 212.372.2375

**NATHAN KROPP**  
nathan.kropp@ngkf.com  
O. 212.372.2056



# 540 MADISON

DOWNLOAD BROCHURE